


- G 1/2" connection with dry and flush capacitance ceramic sensor
- Ranges from 60 mbar to 20 bar
- High overload capability, up to 100 times
- Global error < 0,2% F.S.
- Option: ambient / fluid temperature up to 120°C
- Analog output: 4...20 mA, 2-wire
0...10 Vdc, 3-wire
-  I M2 EEx ia I ($\geq 100\text{mbar}$)
II 1G EEx ia IIC T4/T6 ($\geq 100\text{mbar}$)



Pressure transmitter P 20

Technical data:

Range:	0...60 mbar to 0...20 bar
Output signal:	4...20 mA, 2-wire 0...10 V, 3-wire
Global error:	< 0,2% F.S.
Response time:	200 ms (other on request)
Supply voltage ^(*) :	9...32V DC, 4...20 mA signal 15...30V DC, 0...10 Vdc signal
Ambient temperature ^(*) :	-25... 80 °C (-25...120 °C)
Fluid temperature ^(*) :	-25...100 °C (-25...125 °C)
Thermal drift:	< 0,015%/K (zero) < 0,01%/K (span)
Long term stability:	< 0,2% p. a.
Process connection:	stainless steel 1.4404
Housing:	stainless steel 1.4301
Sensor:	ceramic AL ₂ O ₃
Electr. connection:	connector DIN 43650, IP 65 Quickon, IP 67

^(*) for EEx are other technical specifications

Nöding

Meßtechnik

Ranges

Pressure range	Gauge	absolut	overload (bar)
0...60 mbar* ⁽¹⁾	A9		-0,3/4
0...100 mbar	00		-0,3/4
0...160 mbar	01		-1/5
0...200 mbar	B1		-1/5
0...250 mbar	02		-1/5
0...0,4 bar	03		-1/6
0...0,5 bar	B7		-1/6
0...0,6 bar	04	29 ⁽¹⁾	-1/10
0...1,0 bar	05	30	-1/10
0...1,6 bar	06	31	-1/15
0...2,0 bar	B3	B4	-1/15
0...2,5 bar	07	32	-1/15
0...4,0 bar	08	33	-1/25
0...5,0 bar	F1	F2	-1/40
0...6,0 bar	09	34	-1/40
0...10 bar	10	35	-1/40
0...16 bar	11	36	-1/40
0...20 bar	B5	B6	-1/40
-1...1 bar	D6		-1/10

* Global error 0,5% F.S.

⁽¹⁾ not for EEx

Ordering code

Output signal

- 1 0...10V 3-wire
- 4 4...20 mA 2-wire
- H 4...20 mA 2-wire, -25...120 °C
- E 4...20 mA 2-Leiter, II 1G EEx ia IIC T4/T6
- M 4...20 mA 2-Leiter, I M2 EEx ia I

Range

See table on the left
99 Special range

Process connection and material

- 1 G1/2A DIN 3852 1.4404
- X Clamp 3/4", DN 10...20, 1.4404
- 9 Special Version

Sensor seal

- 1 FPM (Viton), Standard
- 2 NBR (Perbuan), max. 80 °C
- 3 EPDM
- 9 Special Version

Electrical connection

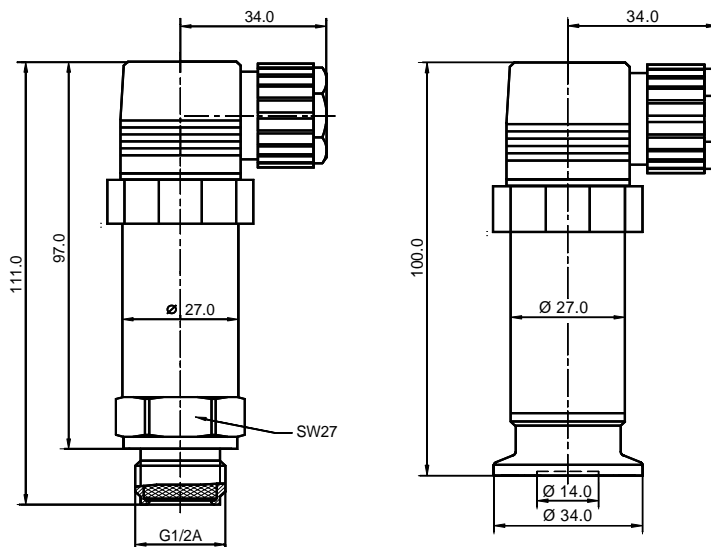
- 0 5m Cable, IP 67
- 1 DIN 43650 Connector
- 6 2m Cable, IP 67
- F Quickon-Connector
- 9 Special Version

Options

- 0 Not potted
- 1 Potted electronic

P20 - [] - [] [] [] [] []

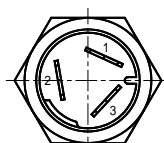
Dimensions



P20-Transmitter II 1G EEx ia IIC T4/T6 are 20mm longer.

Electrical connections

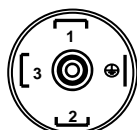
Quickon-Connector



4...20 mA 2-wire

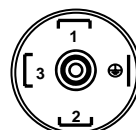
PIN1 Signal +
PIN2 Signal -

DIN 43650-Connector



4...20 mA 2-wire

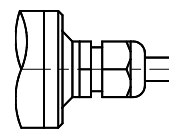
PIN1 Signal +
PIN2 Signal -



0...10V 3-wire

PIN1 Signal +
PIN2 Signal -
PIN3 Output

Cable connection IP67



4...20 mA 2-wire

red Signal +
black Signal -

Modifications reserved without notice, 02.05